

CUMMINS

Cash Room Manager



The Software That Counts™



Currency Processing



Connect CRM to a Cummins JetScan currency scanner and till currency is processed in a few seconds with superior accuracy.

Coin Processing



JetSort coin sorters are fast, easy to use and very compact for use in the most limited of spaces.

Check Processing



MICR encoders can tally, endorse, and amount encode checks quickly and accurately.

Other Receipts



Cash Room Manager software can be configured to include all the various media your tills collect.



A bar code option allows for fast accurate input of data.

Cash Room Manager offers all this and more...

- Complete Cash Room Management System for tracking revenue.
- Utilizes the industry's most advanced coin, currency and check processing equipment.
- Supports multiple stores, departments, registers and cashiers.
- Easy-to-learn software with screen prompts and on-line manual.
- Uses current Microsoft Windows 95/98/NT operating systems.
- Tracks and processes unlimited media types.
- Correction menu allows users to "suspend" a register and amend it later.
- Provides a complete audit trail and report of all transactions.
- Import and export of cash room and POS data using standard file formats.
- Processes cash, checks, coupons, etc. from multiple sales dates.
- Extensive list of built-in reports.

For more information ask for the FREE demo CD and information booklet.





Cash Room Manager *The Software That Counts™*

“With 250 tills from 25 different stores and very little time for processing, we appreciate the ease of operation, speed, and complete reporting of CRM. New employees are productive after the first day of training. The ability to suspend or reopen a till is a big help when needed.”

*Rick Craft,
Cash Vault Supervisor,
LEGOLAND California*



Keeping track of revenue can be a losing proposition. Accountability, out-of-balance registers, pickups, final counts, reconciliation, and reports are labor-intensive. Loss of time quickly becomes loss of money.

Cash Room Manager (CRM) provides a powerful solution for retail cash management. It combines Cummins-Allison software and hardware for an integrated system of cash management and processing. Cash settlement was never so quick and accurate.

CRM is easy to use and requires little training. The Main Menu allows users to launch a wide variety of operations including opening the count screen, preparing funds, making a deposit, closing the day, and signing on or off the system. When assistance is needed, CRM provides on-screen prompts, a help key (F1), and an on-line assistance manual.

Nationwide Retailer
 Calculator Correction Menu Media Summary Register Summary Register Done Help

Store: 1 Retail Store Sales Date: 05/24/199 Proc Date: 05/24/199 Cshr: Cummins Allison

Register: 1 Final

Media Detail: Bills

Declared Total \$: 1,225.00
 Funds Returned \$: 0.00

Register Media	Qty	\$ Amount
Bills	55	233.00
WrapCoin	15	106.00
Checks	3	601.61
Credit Card	1	258.36
Gift Certifi	0	0.00
Store Coupon	0	0.00
LooseCoin	680	12.75

Prior Pickups: 0
 Current Total \$: 1,211.72
 Over/(Short) \$: (13.28)

DENOM	ENTRY	REGISTERS	Pcs	\$ Am
\$ 1			38	38
\$ 2			0	0
\$ 5			5	25
\$ 10			10	100
\$ 20			1	20
\$ 50			1	50
\$ 100			0	0

This easy-to-read screen allows operators to input data and process all necessary media including: checks, coins, currency, coupons, gift certificates and more. When complete, the operator simply presses done or the F2 key.

Register Correction Menu

Change Actual Amounts

Change Declared Amounts

Accept Register

Correct Register ID

Suspend Register

Create Memo

When a register is out of balance, the Register Correction Menu appears. Operators can then change the amounts previously entered, alter the declared amount, accept the register, correct the register ID, suspend the register, or create a memo describing what actions were taken. All correction menu entries are recorded in an Exception Item Report.

one (F2)	
at	CUM PCS
00	1214
00	0
00	5
00	10
00	1
00	1
00	0

.....

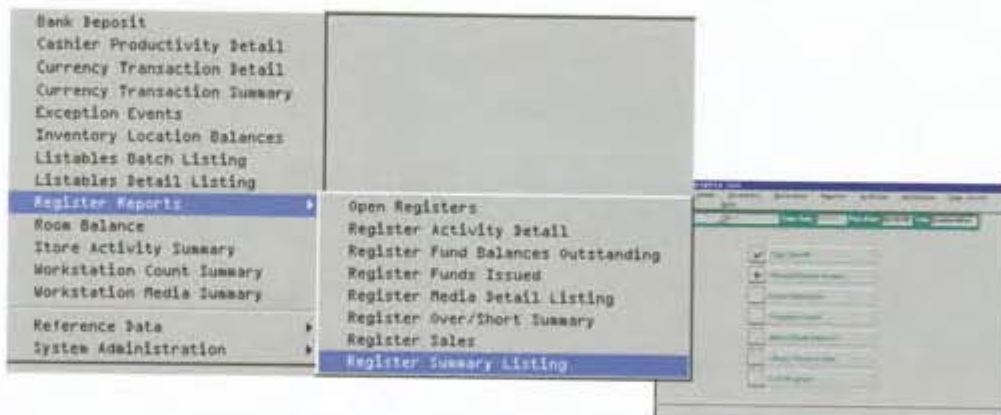
“**T**he combination of CRM and JetScan currency scanners has significantly simplified procedures and training while improving accuracy.”

*Jeff Brown,
Store Operations Manager,
Galyan's Trading Company*



Connecting a JetScan currency scanner to CRM simplifies operations and increases accuracy. A few seconds after mixed currency is put into JetScan, a detailed count by denomination is automatically inserted into CRM currency fields.

CUMMINS



“**B**uilt-in reports provide us with valuable, quantitative data without any extra effort. We use one to evaluate employee productivity and accuracy. It enables us to identify employees needing attention as well as reward our best cashiers.”

Thomas J. Hartman,
Director of
Information Systems,
Waterloo Gardens, Inc.



CRM is designed for use with Windows 95/98/NT technology. It is Year 2000 Compatible and accommodates future changes in US currency. This technology assures long-term performance for years to come.

More than 40 built-in reports are standard and are printed on laser quality printers at the click of a mouse. And, data can be exported or imported as desired.

REGISTER SUMMARY LIST

Report Date: 05/21/1999 1:57:37PM
Cashier: Cummins Allison

Register	Total Sales	Declared Sales	Net Cash	ACTUAL AM
Department: 02150				
1	10,249.27	10,250.02	7,760.54	
Memo: This is the memo line from the correction menu	5,214.36	5,214.36	4,482.00	
2	5,214.36	5,214.36	4,482.00	
Department Sales	\$15,463.63	\$15,464.38	\$12,242.54	
STORE TOTAL	\$15,463.63	\$15,464.38	\$12,242.54	
Less departments	\$0.00			
sales				

FEATURES	BENEFITS
Easy to learn.	Reduced training time and cost.
User friendly.	Large, easy to read menus, which minimize operator errors. Informational pop-up window will display if an error occurs.
Five User Customized Field Labels.	Adapts CRM screens, menus and reports to your existing terms.
Ability to reopen a closed register.	Operators can make adjustments after a register is closed. All changes are tracked in a management report.
Suspend register.	A register can be put on temporary hold pending reconciliation. All changes are tracked in a management report.
More than 30 standard reports included.	Most reporting needs are covered without need for customization.
Pickup and final counts.	The software can accept and track both pickups and final counts.
Uses bi-directional computer communication with Cummins JetSort, JetScan, and check encoders.	Allows quick and accurate counting of mixed coin, mixed currency, checks and other media.
Fund control.	Allows tracking and automated issuance of funds.
Software access can be password protected.	There are five levels of operator access.
Uses Microsoft Windows 95/98/NT.	Uses 32 bit programming for greater speed and performance.
Supports unlimited Stores, Departments and Registers.	Allows for expansion of retailer without any expensive software upgrades.
Data can be imported and exported.	POS information can be automatically imported for seamless, accurate media reconciliation. All tracked media can be exported in standard file formats, allowing external custom reporting capabilities.
Electronic on-line manual included.	Help screens can be accessed quickly for general operational questions as well as field-specific help.
Cash-vault inventory control.	Media can be quickly and accurately tracked, and accounted for at any time.
Multi-user option.	Uses Microsoft networking to allow multiple users to share common data.
Funds Management option.	Provides automated and secure bag tracking.
Y2K Compliant.	Software built today, designed for the future.

Specifications

Requires a PC with Microsoft Windows 95, Windows 98 or Windows NT operating systems.

REQUIRED COMPONENTS	MINIMUM REQUIREMENTS	RECOMMENDED REQUIREMENTS	OPTIONAL EQUIPMENT
CPU	Pentium 166 MHz	Pentium II 266 MHz or higher	Backup Device (Strongly Recommended)
Operating System	Windows 95/98/NT	Windows 95/98/NT	
Hard Drive	1 GB	5-10 GB	Uninterruptible Power Supply
CD-ROM	8x	32x	
Disk Drive	Floppy disk	3.5" 1.4 MB	Network Interface Card (if needed)
RAM	32 MB	64 MB	
Serial Ports	1 per attached device*	1 per attached device*	
Printer		Laser quality	

*Devices can include but are not limited to serial 40-column journal printer, check encoder, coin sorter, and currency scanner/counter.

The information and specifications in this document are provided for the general knowledge of the reader and may be subject to change or correction at any time and without notice.

Microsoft Windows 95/98/NT, LEGOLAND California, Galyan's Trading Company and Waterloo Gardens, Inc. are trademarks of their respective companies.

CA CUMMINS
CUMMINS-ALLISON CORP.

800-786-5528 Fax 800-745-9483
www.cumminsallison.com
email: Inquire@cumminsallison.com